



THE EPSOM & EDEN DISTRICT HISTORICAL SOCIETY INC.

President: Eric Laurenson, 14 Corbett Scott Ave, Epsom (630 5554)
Vice-President: Christine Black, 11 Epsom Ave, Epsom (630 5554)
Secretary: Natalie Taplin, 52 Margot St, Epsom (524 9249)
Treasurer/Membership Secretary: Jeanette Grant, 662A Mt Eden Rd, Mt Eden (638 8566)
Patron: Her Excellency Susan Satyanand
Website: www.epsom-eden.org.nz

NEWSLETTER : JANUARY 2009

A HAPPY NEW YEAR TO ALL

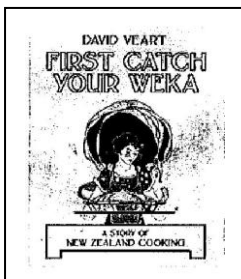
The first meeting for the year will be held on

Monday 2 February 2009 at 7:30 pm

in the Epsom/Eden Room, Epsom Community Centre, 202 Gillies Ave, Epsom
(cnr Gillies Ave/Kimberley Rd)

Parking is available from either Gillies Ave or Kimberley Rd entrances.

Light refreshments served before meeting.



Topic: "First, Catch your Weka"

Speaker: David Veart has assembled a collection of recipes and cookbooks spanning back to NZ's earliest days. In his history, Veart draws on these recipes to tell the fascinating story of the way in which our cooking habits and culture have changed. Beginning with Charles Heaphy's 1840s recipe for weka, stuffed with sage and onion and roasted on a stick, the story progresses on through the Edmonds Cookery Book, Alison Holst, and Des Britten.

David will have copies available for sale at the meeting.

Notice has been given that, as a draft only of the Combined Annual Accounts as available at the Annual General Meeting held 4 August 2008, the first 15 minutes of this meeting will be a Special General Meeting to approve the Annual Accounts in their final audited form.



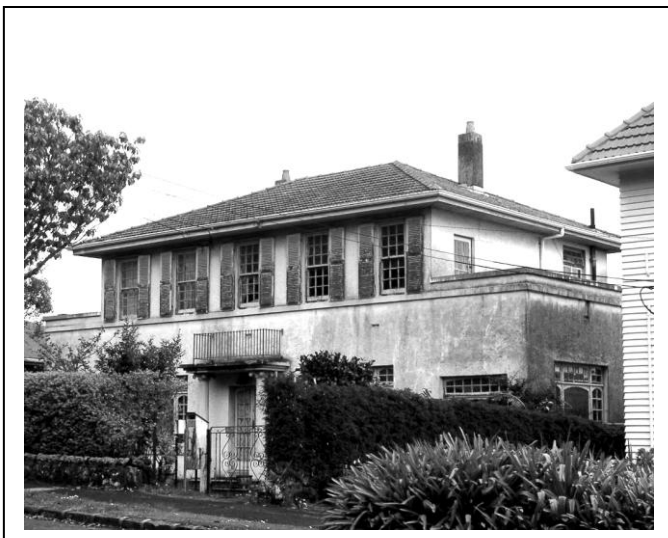
Sales of *The History of Epsom* are proceeding satisfactorily. Thanks to all those members who walked the streets of Epsom distributing flyers. We are inspired to ask if any member would be prepared to write an article for *Prospect* on the many and varied letter boxes of Epsom?

MAYOR BANKS FACILITATES A BREAKTHROUGH

Mayor John Banks has enabled progress to be made on a review of the council's plans to lift demolition controls on pre-1940s buildings in residential 2 zones. As part of the agreement reached with property owners and heritage experts, architects Salmond Reed will now undertake a review of most of the pre-1940 homes that a council survey had previously excluded from the demolition controls. The council wrote to all owners and occupiers of residential 2 properties in July asking for feedback on where demolition controls could apply. The public response prompted the establishment of a working party chaired by heritage architect Jeremy Salmond at the mayor's request. The working party looked at which pre-1940s dwellings in the residential 2 zone should be excluded from the demolition controls, and reviewed the criteria for assessing resource consents to demolish pre 1940s homes in the residential 2 zone.

Your Committee is preparing the year's activities – please contact any of the following if you have any suggestions or recommendations for speakers and/or outings.

President	Eric Laurenson	630 3850
	Email: laurensonarch@xtra.co.nz	
Vice-President	Christine Black	630 5554
	Email: cblack@tui.net.nz	
Secretary	Natalie Taplin	524 9249
	Email: natalietaplin@vodafone.co.nz	
Membership Secretary	Jeanette Grant	638 8566
Treasurer/Librarian	Email: jeanette.grant@xtra.co.nz	
Committee	Bryan Boon	625 6465
	Helen Laurenson	630 3850
	Valerie Sherwood	630 2927
	David Pittman	520 2859



The house at 15 Belvedere St where the late Ian Madden lived. Our warmest appreciation to John Stacpoole who has written an excellent tribute to Ian which will be published in the 2009 issue of *Prospect*.